

Industry Cloud Solution Brief | PUBLIC

Industry Cloud Solution Name **Altima Resource and Inventory Management**

Objectives

Solution

Benefits

Quick Facts



Altima Resource and Inventory Management Platform for Telecommunications

Your solution of choice for telecommunications technical resource management

THE BEST RUN





Centralized management of all Communication Service Provider Technical Resources

Altima Resource and Inventory Management (or Ai.RIM) is an application used to manage physical (SIM cards, Modems, Set-top-boxes, etc.) and logical (Phone numbers, MAC addresses, Usernames, etc.) resources. It is commonly used as an extension to another OSS/BSS component such as S/4HANA Subscription Order and Contract Management component.

With the massively anticipated proliferation of the “Things” in IoT and exponential growth rates in the number of served mobile subscribers, communication service providers must optimize their processes of technical resource inventory management in order to cope with massive demand.

Multi vendor BSS environments and systems make it impossible to have a tightly managed resource allocation in the Order to Cash and Order to Procure business processes. **Altima Resource Inventory Management as an add on to SAP BRIM offers a closed loop solution for the Technical Resource Management.**

Some of the processes that are usually causing high delays in the go to market include :

- Non synchronized status data between the CRM and the ERP systems
- Manual management of the customer lifecycle
- Inability to automatically recycle the resources from Contract/Order initiation and change processes
- In-house developments without any clear roadmap and accountability

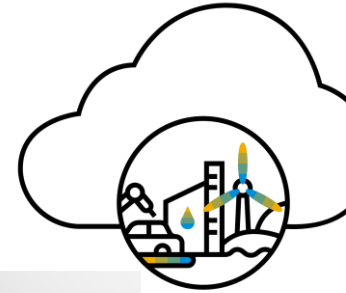
Up to 8x

Faster time to market for SIM Order to Cash

- E2E closed process with SAP BRIM
- Automated SIM and non mobile technical resource management
- Management of all technical resources from different LoB-s

Inventory of SIM-s is continuously maintained and the ODI* infrastructure in S/4HANA SOM is updated

1. Footnote www.sap.com.



Complete technical resource **Lifecycle** Management

In telecommunications industry , service bearing technical resources need to have specific statuses. Some of the relevant statuses in telecommunications are important for providing additional insights into the customers Lifecycle management and suggest improvements for Customer Retention and Loyalty management

Resource lifecycle attributes, ensure that the technical resource is being tracked all the time and it's status is visible to other customer back office systems such as S/4HANA for Customer Management.

This ensures consistency in operations and increased customer satisfaction.

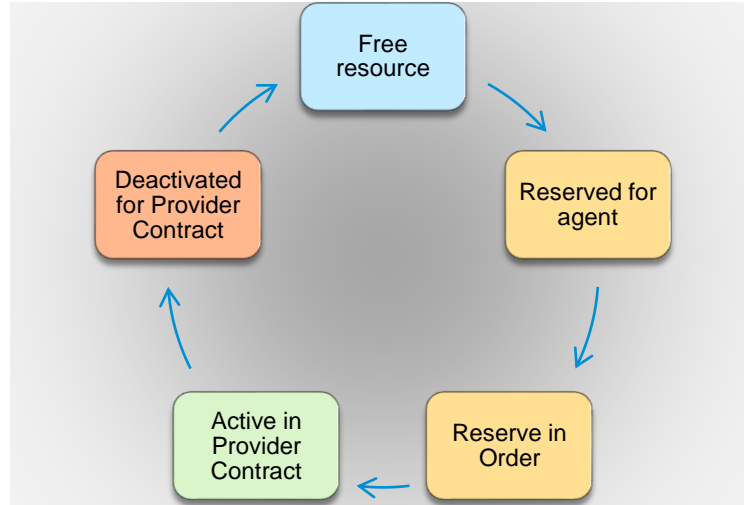


Figure 1: Resource Lifecycle in AI.RIM



Proven add on to SAP BRIM for accelerating your time to market

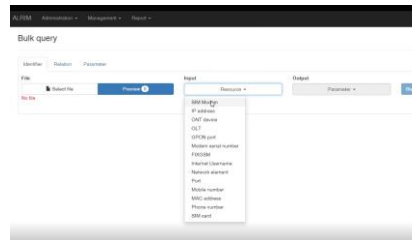
Utilizing simple management tools, platform allows ease of use in terms of administration and development. **Altima's RIM solution** has already been adopted by many customers in their SAP BRIM environments and they are now reaping the benefits of transparent technical resource lifecycle management process.

Resource agnostic

Platform allows the flexibility of defining new technical resources which are not already defined as an industry standard. This makes it ideal solution ad-on for the new lines of business such as IoT for the management of Things. CSP's are now looking into the possibility of offering fully fledged solutions apart from connectivity, and that is where the management of resource allocation and lifecycle is crucial.

Some of the technical processes covered by the platform include:

- Resource association by type and uniqueness
- Resource association in shared mode
- Owner management – Sales Representative
- End user – Vendor
- Order relationship – traceability of resource history by orders
- Batch processing import/export of resource data (SIM, SMARTCARD,SN)
- Configurable import from external system



Some of the standard resources available of the shelf include



- **MSISDN management**
- **IMSI management**
- **CAM management**
- **OLT management**
- **STB management**
- **Modem management**
- **Wi-Fi AP management**



Summary

Ai.RIM is a comprehensive solution for logical and physical resources management in service enablement platforms. It enables CSP's to maintain generic and non-generic technical resources in a unified platform.

Objectives

- Synchronized technical resource status data across all customer back office tools such as CRM , ERP
- Automated lifecycle management
- Closed loop between SAP S/4HANA Customer Management in Order to Cash and Order to Delivery business processes for Telecommunications industry

Solution

- SAP BRIM + Altima AI.RIM
- Tightly integrated resource management system for CSP's running their billing in S/4HANA

Benefits

- Flexible and open platform
- Complete visibility on the resource status
- Use the same platform for all telecommunication services
- Tightly integrated solution with SAP S/4HANA BRIM offering

Learn more

<https://www.versoaltima.com>

Follow us



www.sap.com/contactsap

© 2021 SAP SE or an SAP affiliate company. All rights reserved.

No part of this publication may be reproduced or transmitted in any form or for any purpose without the express permission of SAP SE or an SAP affiliate company.

These materials are provided for information only and are subject to change without notice. SAP or its affiliated companies shall not be liable for errors or omissions with respect to the materials.

SAP and other SAP products and services mentioned herein as well as their respective logos are trademarks or registered trademarks of SAP SE (or an SAP affiliate company) in Germany and other countries. All other product and service names mentioned are the trademarks of their respective companies.

See www.sap.com/trademark for additional trademark information and notices.

